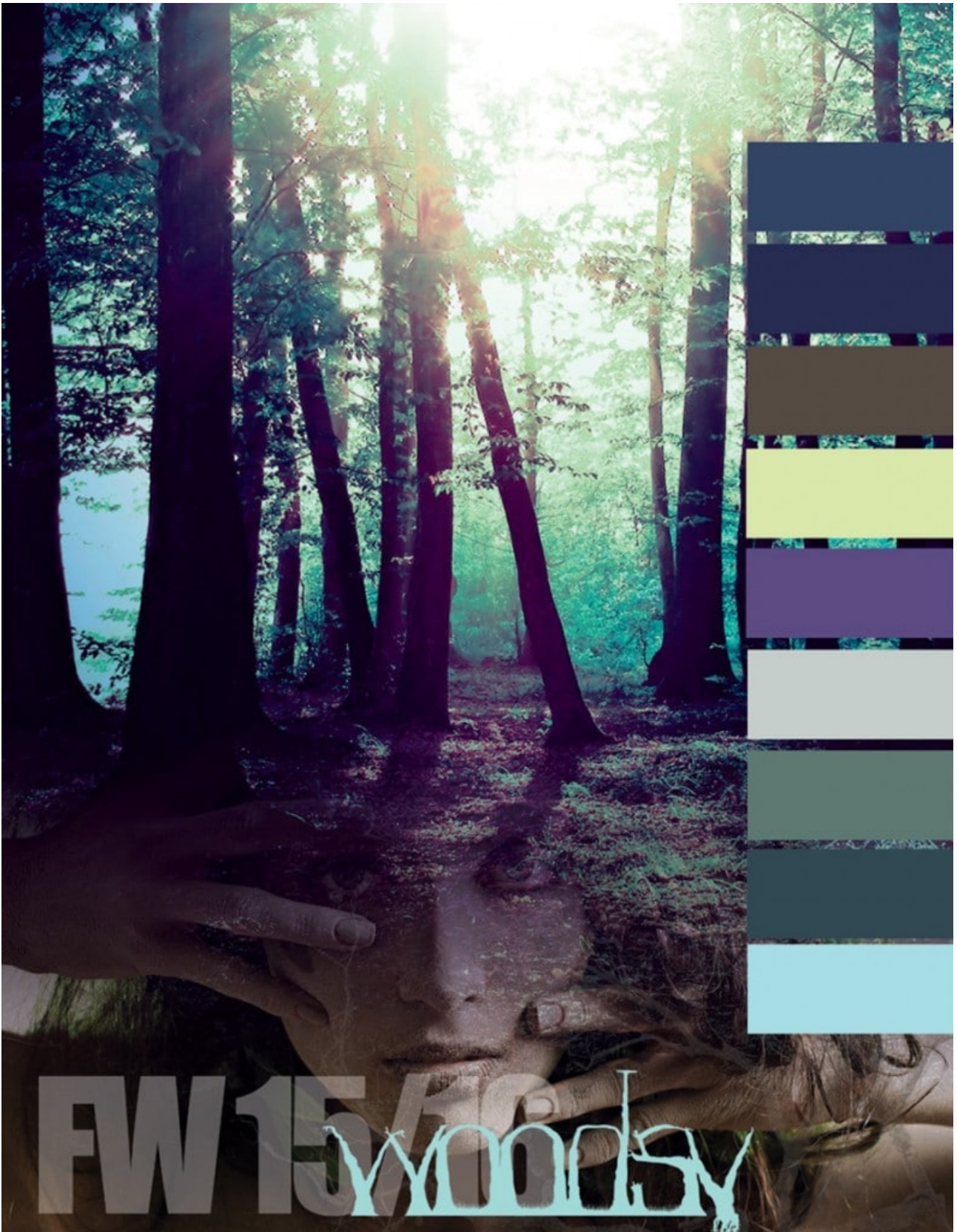


Autumn/Winter 2015-2016 | Woodsy

In somber, quiet woods, late autumn afternoons
The shadows fall in inky blue and misty green
Declining sun reflects in murky waters
Somewhat surreal and very much in watercolor
And only sudden pops of color
Reveal what lies beneath the frozen leaves
A reminisce of lasting beauty
Contained in fragile filigree of gentile flowers



[Click here for Pinterest Inspiration Board](#)

“Woodsy” Color Combinations

Blues are essential for this palette, from deep and saturated shades, to more dusty and subdued. Olives are intense, infused with yellow, with rich earthy feel. Bright aqua and tender

green bring elegant lightness to the palette. Dazzling violet makes the color scheme more radiant and refined.

